

MORE HIGH GRADE VANADIUM AND BASE METALS INTERCEPTED AT KASKARA

- 22 m @ 1.81% V₂O₅, 4.16% Pb, 1.77% Zn and 0.26% Cu (**4.80 % CuEQ***), in underground channel sampling 45 m below surface, including:
 - ▶ 5m @ 5.44% V₂O₅, 12.25% Pb, 5.07% Zn and 0.62% Cu (**14.16 % CuEQ**)
- High grade vanadium, lead, zinc and copper continuity now confirmed to 67 m below surface
 - ▶ New results are located 15 m directly below previously reported workings where 13 m @ 2.87% V₂O₅, 7.43% Pb, 2.89% Zn and 0.42% Cu was intercepted.
- Mineralisation thickens with, and is open at, depth.
- Intercepts on two levels are positioned directly above the main IP anomaly, which is the target for Cu-rich mineralisation.
- Kaskara has the potential to be a major high-grade polymetallic deposit.

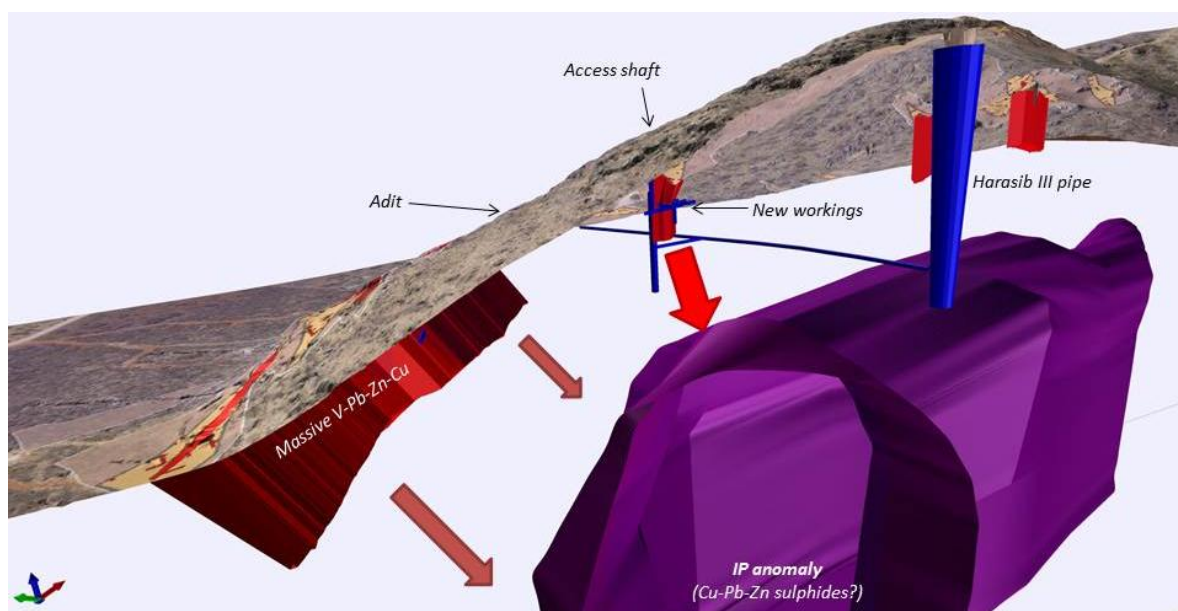


Figure 1 - 3D model of mineralisation (red) and geophysical anomalies (purple) at Kaskara, showing the underground workings (blue). Arrows show the expected extension of the massive V-Pb-Zn-Cu mineralisation to depth towards the IP anomaly.

* CuEQ = copper equivalent. The copper equivalent calculation represents the total metal value for each metal, multiplied by the conversion factor, summed and expressed in equivalent copper percentage. These results are exploration results only and no allowance is made for recovery losses that may occur should mining eventually result nor metallurgical flowsheet considerations. The copper equivalent calculation is intended as an indicative value only. Copper Equivalent Formula= Cu% + (Pb% x 0.253) + (Zn% x 0.241) + (V₂O₅% x 1.695). Price Assumptions- Cu (US\$8,192/t), Pb (US\$2,065/t), Zn (US\$1,979/t), V₂O₅ (US\$13,888/t).

HIGH-GRADE POLYMETALLIC MINERALISATION INTERCEPTED

Very high grade intercepts have been returned from completed channel sampling programmes on the 1725 and 1710 levels of workings (30 and 45 m respectively beneath surface) at the Kaskara prospect in northern Namibia (Figures 1 & 2). **The highest grade and thickest intercepts are on the 1710 level**, directly below the high grade results previously reported from the 1725 level. **This and previous drilling confirms the continuity of the high grade shoot from surface to at least 67 m depth, and remains open laterally and at depth.**

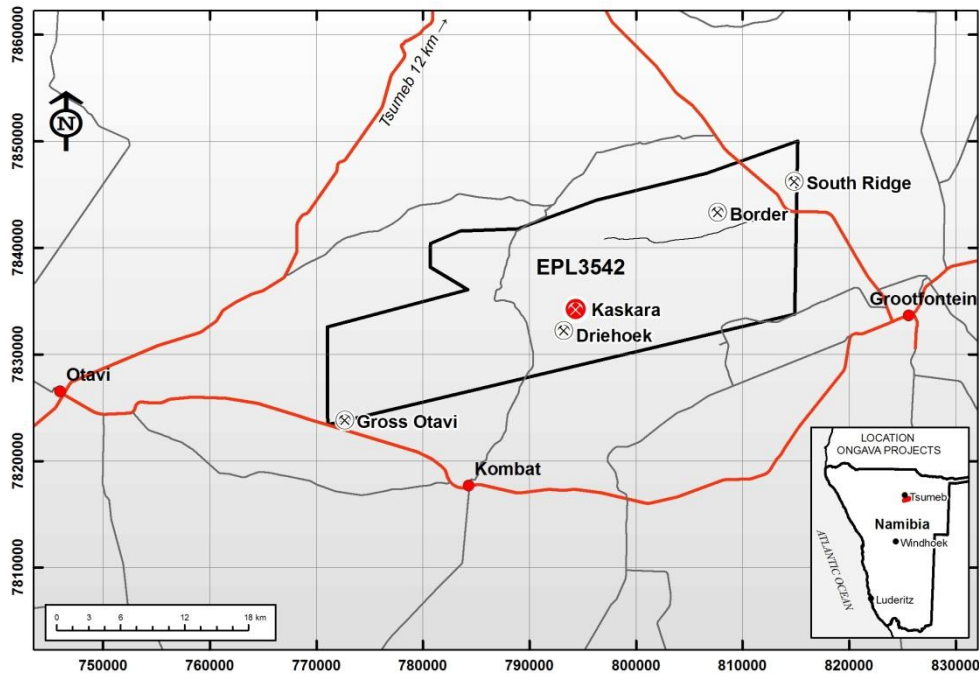


Figure 2 – Location of the Kaskara project.



Figure 3 – High-grade vanadate mineralisation on the 1710 level, 45 m beneath surface.

EXTENSIVE MINERALISATION CONFIRMED BY UNDERGROUND SAMPLING

Channel sampling is now completed from the accessible underground workings on both the 1725 and 1710 levels. Almost every channel returned anomalous vanadium and base metals results including some thick and very high grade intercepts. Significant results are as follows:

1725 Level (30 m beneath surface)

- **KKUG0003** 13 m @ 2.31% V₂O₅, 5.59% Pb, 2.38% Zn and 0.32% Cu **(6.22% CuEQ)**
including 2 m @ 8.49% V₂O₅, 19.85% Pb, 7.43% Zn and 0.91% Cu **(22.13% CuEQ)**
(previously reported by 4m composites)
- **KKUG0007** 1 m @ 0.45% V₂O₅, 1.14% Pb, 0.38% Zn and 0.12% Cu **(1.27% CuEQ)**
- **KKUG0008** 1 m @ 0.91% V₂O₅, 2.27% Pb, 1.11% Zn and 0.32% Cu **(2.70% CuEQ)**
- **KKUG0013** 12 m @ 0.84% V₂O₅, 2.25% Pb, 1.30% Zn and 0.16% Cu **(2.47% CuEQ)**
including 2 m @ 1.95% V₂O₅, 5.19% Pb, 4.21% Zn and 0.34% Cu **(5.98% CuEQ)**
and 1 m @ 3.52% V₂O₅, 8.16% Pb, 2.44% Zn and 0.47% Cu **(9.08% CuEQ)**
- **KKUG0014** 1 m @ 0.95% V₂O₅, 2.11% Pb, 0.82% Zn and 0.20% Cu **(2.54% CuEQ)**
- **KKUG0015** 5 m @ 0.13% V₂O₅, 0.98% Pb, 0.63% Zn and 0.70% Cu **(1.32% CuEQ)**
including 1 m @ 0.01% V₂O₅, 2.09% Pb, 0.99% Zn and **3.19% Cu (3.97% CuEQ)**

1710 Level (45 m beneath surface)

- **KKUG0019** 22 m @ 1.81% V₂O₅, 4.16% Pb, 1.77% Zn and 0.26% Cu **(4.80% CuEQ)**
including 5 m @ 5.44% V₂O₅, 12.25% Pb, 5.07% Zn and 0.62% Cu **(14.16% CuEQ)**
- **KKUG0017** 1 m @ 1.10% V₂O₅, 2.75% Pb, 1.14% Zn and 0.31% Cu **(3.157% CuEQ)**
and 1 m @ 0.24% V₂O₅, 0.81% Pb, 0.73% Zn and 0.06% Cu **(0.85% CuEQ)**

Diamond drilling of the same shoot (previously reported)

- **KKDD029** 21.85m @ 2.52% V₂O₅, 5.79% Pb, 1.81% Zn and 0.45% Cu from 53.96m **(6.61% CuEQ)**

A full listing of the intercepts and trench details is found in Appendix 1.

A HIGHLY MINERALISED SHOOT OPEN AT DEPTH

The massive mineralisation occurs as a continuous sub-vertical shoot extending from surface (1755mRL) down past the 1710 level (Figures 4 & 5). This new sampling shows that **the body is thickening with, and is open at depth**. It starts at approximately 2 m thick at surface, approaches 10 m true thickness at the 1725 level, and is around 12 m thick at the 1710 level. The high-grade mineralised shoot occurs within and is enveloped by a broader halo of moderate to strong vein network mineralisation. A massive polymetallic gossan mapped at surface appears to be the surface exposure of this “ore shoot” (Figure 6). The halo of vein

network mineralisation seen underground is the depth extension of the vein and gossan network (Figure 6) mapped at surface.

The new underground results reported here augment the earlier reported result from the nearby drillhole KKDD029 (see above). This intercept is from the same zone of mineralisation as the above channel sampling results, but extends further downwards. The earlier drill result shows that **the mineralised shoot continues downwards for at least another 22 m beyond the 1710 level**. It is expected that the shoot will continue downwards for at least another 100 m (probably more) to intersect sulphide mineralisation at depth (Figures 4 & 5).

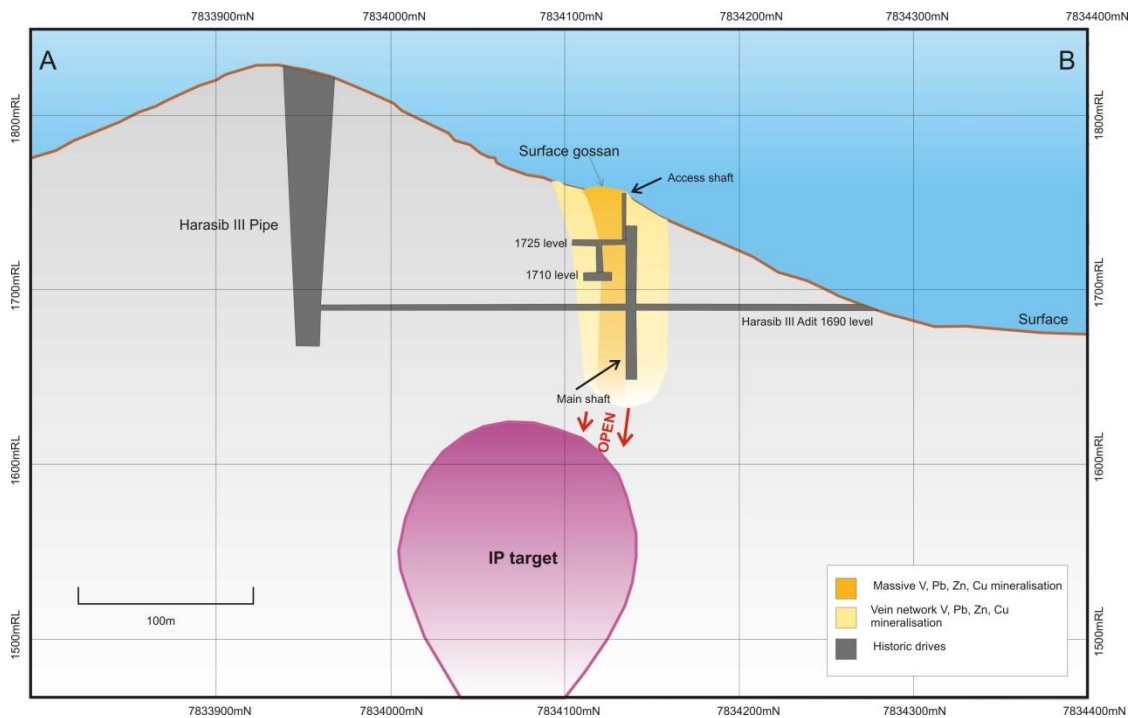


Figure 4 – Projected cross section of the Kaskara Mine. Note that the main adit and shaft are projected from up to 70 m off section, and the main mineralised zone is not intersected in the adit.

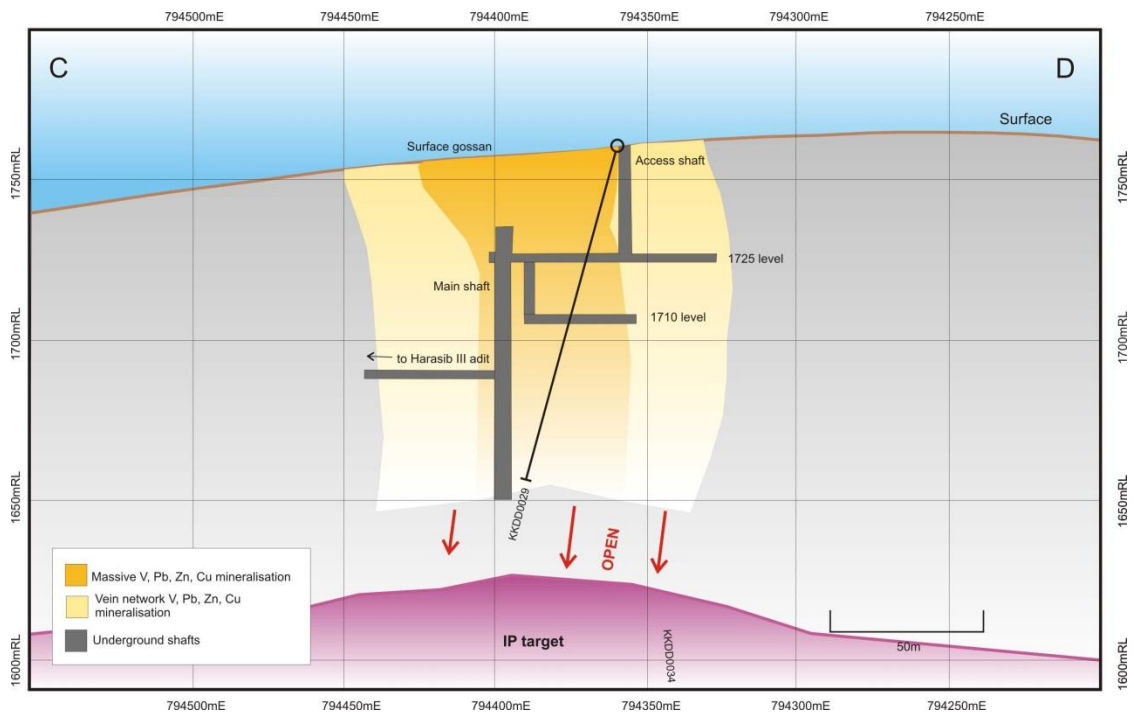


Figure 5 – Longitudinal projection of the Kaskara Mine. The entrance to the adit is out of the page, toward the reader.

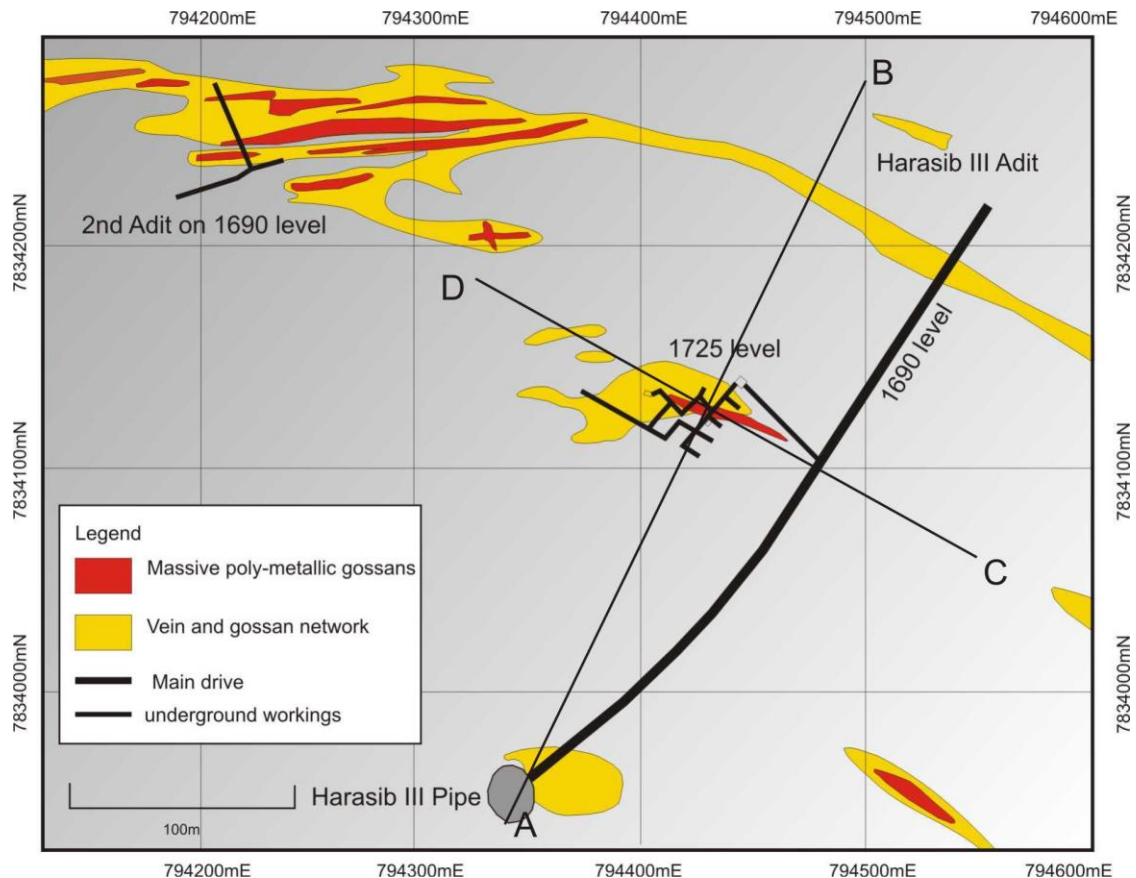


Figure 6 – Location of mine workings and surface mineralisation at Kaskara. A-B represents the line of the cross-section in Figure 4, and C-D represents the line of the longitudinal projection in Figure 5.

No stopeing has taken place in the worked areas, with each of the levels comprising a series of small access tunnels measuring 1 m by 1.5 m. Apart from these tunnels, all of the high-grade material has been left behind by the historic miners.

This particular mineralised shoot is only a small part of the mineralised system at Kaskara. Many massive polymetallic gossans and vein networks have been mapped at surface (Figure 4), and each of these are expected to correspond to a similar shoot of mineralisation. For example, drillhole KKDD0025 through one of the other gossans approximately **250 m northwest** intercepted **2.7m @ 4.30% V₂O₅, 10.45% Pb, 3.40% Zn, and 0.69% Cu** from surface.

ONGOING WORK

Geological mapping and channel sampling programmes are ongoing in the Harasib III adit on the 1690 level and inside the Harasib III open pit at the top of the Harasib III pipe (Figure 5). Results of these programmes will be reported as they come to hand.

Results from the channel sampling will be combined with detailed underground mine surveying to generate accurate 3D models of the underground workings and to create mineralisation wireframes. These 3D models will be utilised to plan the next phase of drilling at Kaskara.

Drilling will firstly target the projected down dip projection of the high grade V-Pb-Zn-Cu mineralisation located in the workings underground and in outcrop throughout the Kaskara area. As the mineralisation is traced downwards, the IP anomaly will be intersected at depth, hopefully resulting in the intersection of sulphide mineralisation.

Dry drilling techniques will be utilised in future at Kaskara. Recent studies by mud engineers have shown that the Kaskara ground is not amenable to diamond drilling due to an adverse reaction between the drilling fluids and the V-Pb-Zn-Cu mineralisation. The roads to the top of the hill at Kaskara will be upgraded and an RC rig will be commissioned to complete the drilling. Sonic drilling, another dry drilling technique will be investigated in detail as a fall back option should RC drilling prove unsuccessful.

Drilling will commence as soon as possible. Heavy daily rains have restricted light vehicle access. It is expected that the wet season will ease in March, when drilling is scheduled.

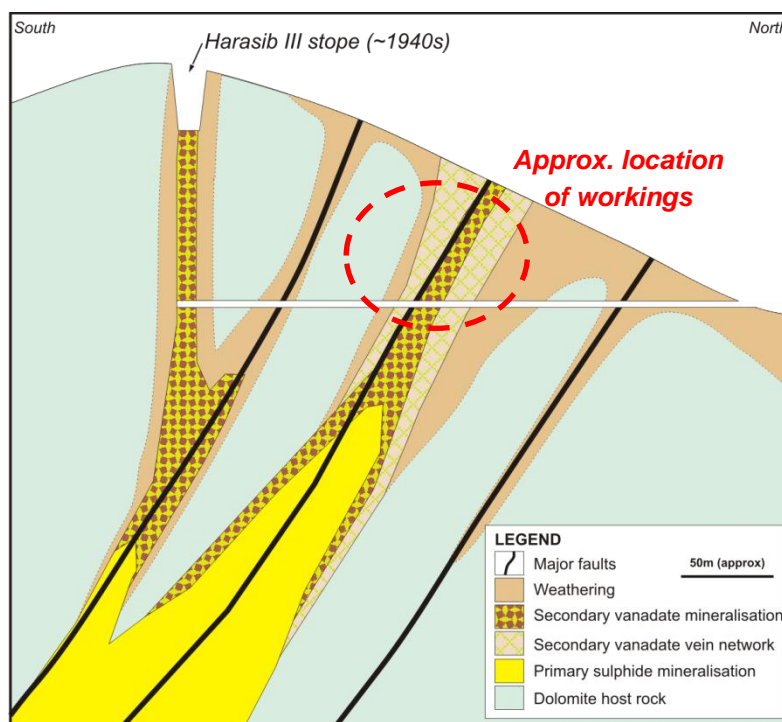


Figure 6 – Diagrammatic section showing the expected relationships between the secondary mineralisation (sampled here) and the expected primary mineralisation at depth.

TARGET AT KASKARA

The target at Kaskara (Figure 7) is a **copper-lead-zinc sulphide orebody at depth**, overlain and supplemented by significant **non-sulphide V-Pb-Zn-Cu orebodies at and near surface**.

The massive V-Pb-Zn-Cu mineralisation encountered at surface, in drilling, and underground is deeply weathered secondary mineralisation. At other deposits in the region, this style of mineralisation occurs above fresh primary sulphide mineralisation at depth. The identification of IP anomalies below this secondary mineralisation is regarded as the topmost portion of such sulphide mineralisation at Kaskara.

Kaskara shows a number of features characteristic of the major deposits of the region, such as Tsumeb, including the following:

- Outcropping, locally high-grade mineralisation;
- Outcropping disseminated sulphide mineralisation;
- A broad, strong soil geochemical anomaly;
- Location on a deviation in a major fault system;
- Geophysical anomalies at depth (Figures 1, 4, and 5);

- Deep penetrative weathering in a region of otherwise shallow weathering (Figure7); and
- Secondary copper-lead-zinc vanadate minerals (Figure 3) indicative of primary copper-lead-zinc sulphide mineralisation at depth.

Kaskara represents an outstanding opportunity for Sabre, showing all of the hallmarks of a major deposit.

For further information regarding the Company's activities, please contact:

Dr Matthew Painter – General Manager – Exploration
Phone (08) 9481 7833

Or consult our website:

www.sabresources.com

Competent Person Declaration

The information in this report that relates to Exploration Results, Mineral Resources or Ore Reserves is based on information compiled by Dr Matthew Painter of Sabre Resources Ltd, who is a member of The Australian Institute of Geoscientists. Dr Painter has sufficient experience that is relevant to the style of mineralisation and type of deposit under consideration and to the activity that he is undertaking to qualify as a Competent Person as defined in the 2004 Edition of the "Australasian Code for Reporting of Exploration Results, Mineral Resource and Ore Reserves". Dr Painter consents to the inclusion in the report of the matters based on his information in the form and context in which it appears.

About Sabre Resources Ltd

Sabre's primary focus is the exploration and development of the Ongava Polymetallic Project in Namibia. Our licence contains more than 30 known copper, lead, zinc and vanadium occurrences, ranging from grass-roots prospects such as the Kaskara copper-lead-zinc play, through unmined deposits such as the Border and Driehoek lead-zinc deposits, to historic mine sites such as Harasib Claims and Uitsab. Gallium, germanium, silver and gold, are also highly prospective.

Based in Perth, Australia, Sabre will build value for shareholders through the definition of JORC compliant resources in this metal-rich region. Extensive exploration, management and corporate experience are combined in a lean company structure that aims to provide maximum return to shareholders.

APPENDIX 1

DETAILS OF RECENT UNDERGROUND CHANNEL SAMPLING AT KASKARA

NSI = No significant intercept.

KKUG0003 (Origin: 33S 794408mE 7834136mN, 1725mRL, Azimuth: 135°)

(Inflection: 33S 794418mE 7834126mN, Azimuth: 049°, Length: 34m)

13 m @ 2.31% V₂O₅, 5.59% Pb, 2.38% Zn and 0.32% Cu from 7m

including 2 m @ 8.49% V₂O₅, 19.85% Pb, 7.43% Zn and 0.91% Cu from 8m

KKUG0004 (Origin: 33S 794430mE 7834124mN, 1725mRL, Azimuth: 130°, Length 6m)

1 m @ 0.13% V₂O₅, 0.42% Pb, 0.26% Zn and 0.04% Cu from 1m

KKUG0005 (Origin: 33S 794426mE 7834133mN, 1725mRL, Azimuth: 120°, Length 5m)

1 m @ 0.17% V₂O₅, 0.41% Pb, 0.28% Zn and 0.04% Cu from 2m

KKUG0006 (Origin: 33S 794425mE 7834117mN, 1725mRL, Azimuth: 022°, Length 8m)

NSI

KKUG0007 (Origin: 33S 794424mE 7834116mN, 1725mRL, Azimuth: 226°, Length 8m)

8 m @ 0.12% V₂O₅, 0.37% Pb, 0.36% Zn and 0.04% Cu from 0m

including 1 m @ 0.45% V₂O₅, 1.14% Pb, 0.38% Zn and 0.12% Cu from 6m

KKUG0008 (Origin: 33S 794418mE 7834110mN, 1725mRL, Azimuth: 141°, Length 8m)

2 m @ 0.51% V₂O₅, 1.33% Pb, 1.01% Zn and 0.19% Cu from 2m

and 1 m @ 0.11% V₂O₅, 0.31% Pb, 0.22% Zn and 0.04% Cu from 6m

KKUG0009 (Origin: 33S 794417mE 7834125mN, 1725mRL, Azimuth: 109°, Length 11m)

1 m @ 0.02% V₂O₅, 0.15% Pb, 0.51% Zn and 0.01% Cu from 2m

KKUG0010 (Origin: 33S 794427mE 7834121mN, 1725mRL, Azimuth: 001°, Length 4.5m)

NSI

KKUG0011 (Origin: 33S 794427mE 7834126mN, 1725mRL, Azimuth: 051°, Length 3m)

NSI

KKUG0012 (Origin: 33S 794426mE 7834132mN, 1725mRL, Azimuth: 106°, Length 7m)

5 m @ 0.11% V₂O₅, 0.32% Pb, 0.34% Zn and 0.04% Cu from 1m

KKUG0013 (Origin: 33S 794412mE 7834130mN, 1725mRL, Azimuth: 219°, Length 13m)

12 m @ 0.84% V₂O₅, 2.25% Pb, 1.30% Zn and 0.16% Cu from 0m

including 2 m @ 1.95% V₂O₅, 5.19% Pb, 4.21% Zn and 0.34% Cu from 0m

and 1 m @ 3.52% V₂O₅, 8.16% Pb, 2.44% Zn and 0.47% Cu from 4m

KKUG0014 (Origin: 33S 794437mE 7834132mN, 1725mRL, Azimuth: 131°, Length 8m)

1 m @ 0.95% V₂O₅, 2.11% Pb, 0.82% Zn and 0.20% Cu from 0m

and 1 m @ 0.08% V₂O₅, 0.22% Pb, 0.32% Zn and 0.03% Cu from 2m

KKUG0015 (Origin: 33S 794411mE 7834114mN, 1725mRL, Azimuth: 040°, Length 10m)
5 m @ 0.13% V₂O₅, 0.98% Pb, 0.63% Zn and 0.70% Cu from 3m
including 1 m @ 0.01% V₂O₅, 2.09% Pb, 0.99% Zn and 3.19% Cu from 7m

KKUG0016 (Origin: 33S 794411mE 7834112mN, 1725mRL, Azimuth: 300°, Length 11m)
1 m @ 0.34% V₂O₅, 0.85% Pb, 0.34% Zn and 0.07% Cu from 9m

KKUG0017 (Origin: 33S 794401mE 7834112mN, 1710mRL, Azimuth: 000°)
(Inflection: 33S 794401mE 7834120mN, Azimuth: 090°)
(Inflection: 33S 794408mE 7834120mN, Azimuth: 180°, Length: 30m)
2 m @ 0.61% V₂O₅, 1.54% Pb, 0.72% Zn and 0.17% Cu from 0m
including 1 m @ 1.10% V₂O₅, 2.75% Pb, 1.14% Zn and 0.31% Cu from 0m
1 m @ 0.11% V₂O₅, 0.32% Pb, 0.27% Zn and 0.02% Cu from 8m
3 m @ 0.36% V₂O₅, 0.21% Pb, 0.39% Zn and 0.02% Cu from 14m
4 m @ 0.15% V₂O₅, 0.49% Pb, 0.49% Zn and 0.04% Cu from 19m
including 1 m @ 0.24% V₂O₅, 0.81% Pb, 0.73% Zn and 0.06% Cu from 21m
3 m @ 0.11% V₂O₅, 0.36% Pb, 0.29% Zn and 0.04% Cu from 25m

KKUG0018 (Origin: 33S 794421mE 7834127mN, 1710mRL, Azimuth: 189°, Length 6m)
1 m @ 0.02% V₂O₅, 0.13% Pb, 0.39% Zn and 0.01% Cu from 5m

KKUG0019 (Origin: 33S 794409mE 7834120mN, 1710mRL, Azimuth: 090)
(Inflection: 33S 794425mE 7834120mN, Azimuth: 230°, Length: 26m)
22 m @ 1.81% V₂O₅, 4.16% Pb, 1.77% Zn and 0.26% Cu from 0m
including 5 m @ 5.44% V₂O₅, 12.25% Pb, 5.07% Zn and 0.62% Cu from 4m

KKUG0020 (Origin: 33S 794430mE 7834120mN, 1710mRL, Azimuth: 080°, Length 17m)
NSI

KKUG0021 (Origin: 33S 794426mE 7834125mN, 1710mRL, Azimuth: 190°, Length 3m)
NSI